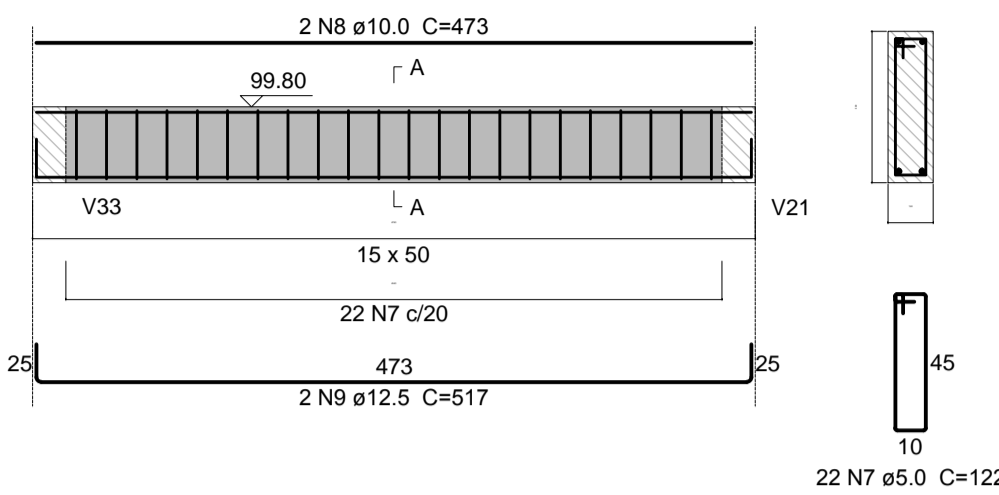
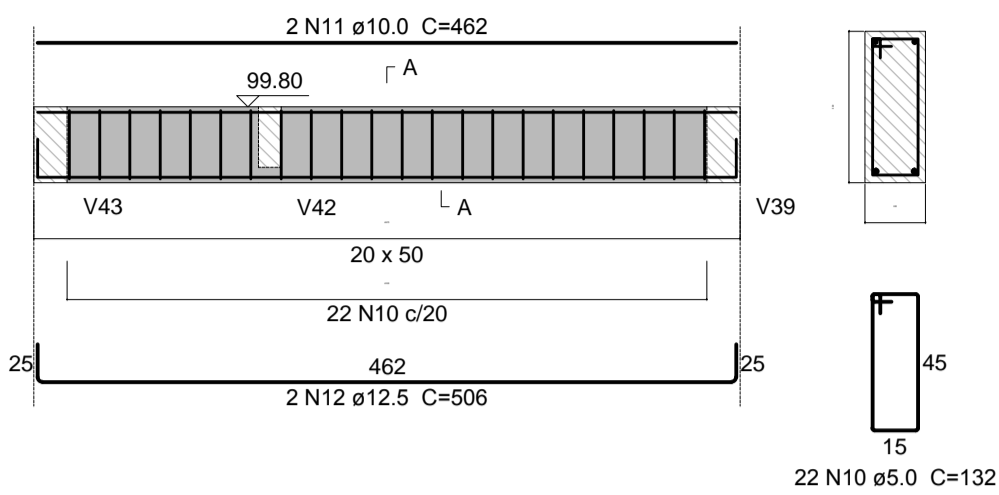


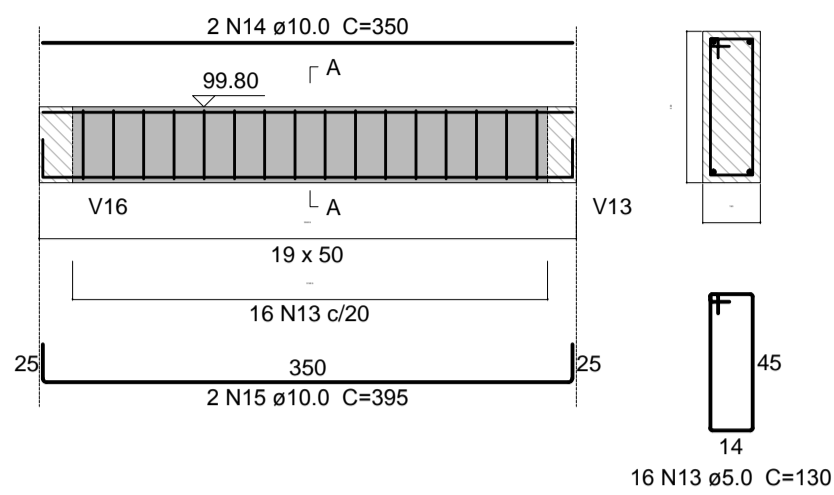
**V84 (15 x 50)**  
ESC 1:50



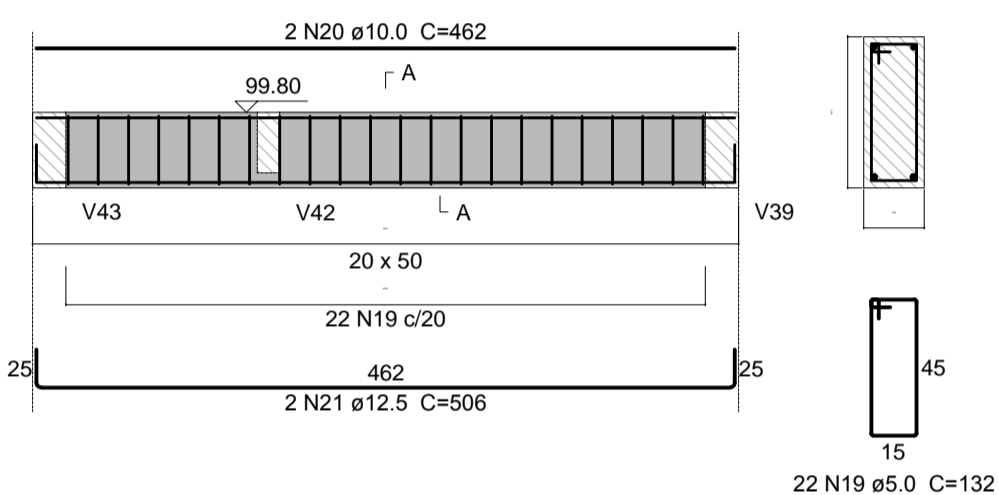
**V85 (20 x 50)**  
ESC 1:50



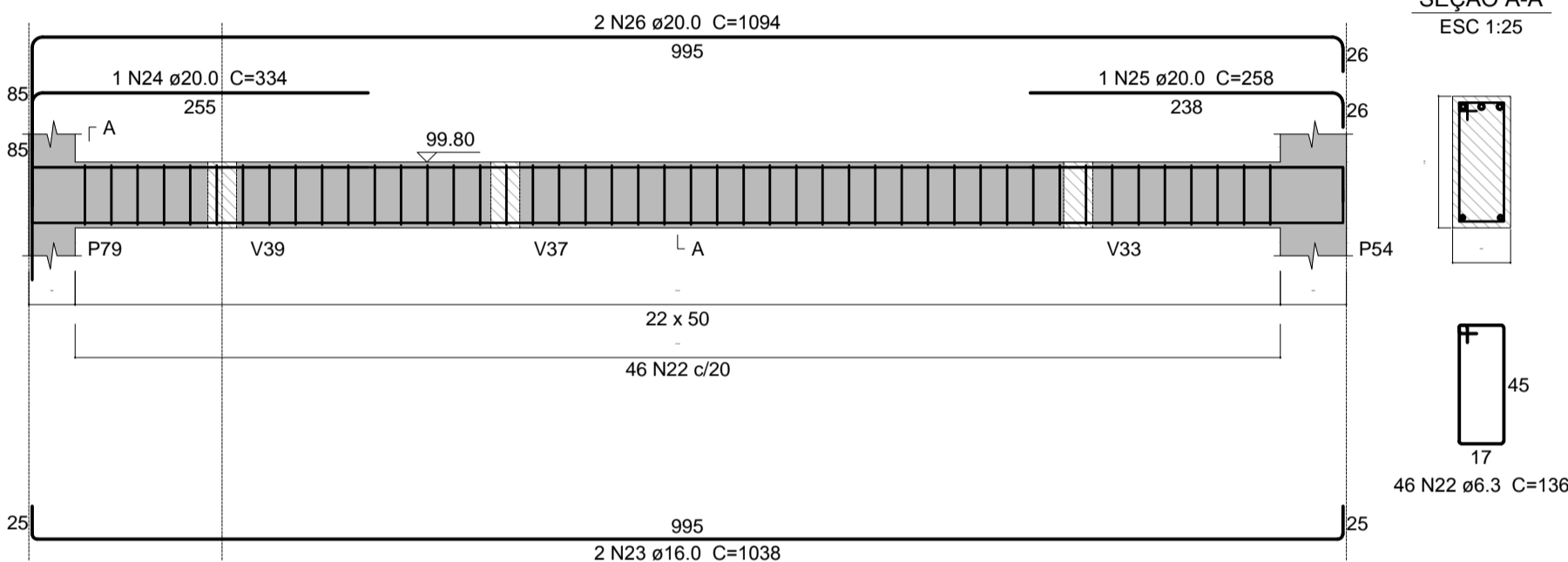
**V86 (19 x 50)**  
ESC 1:50



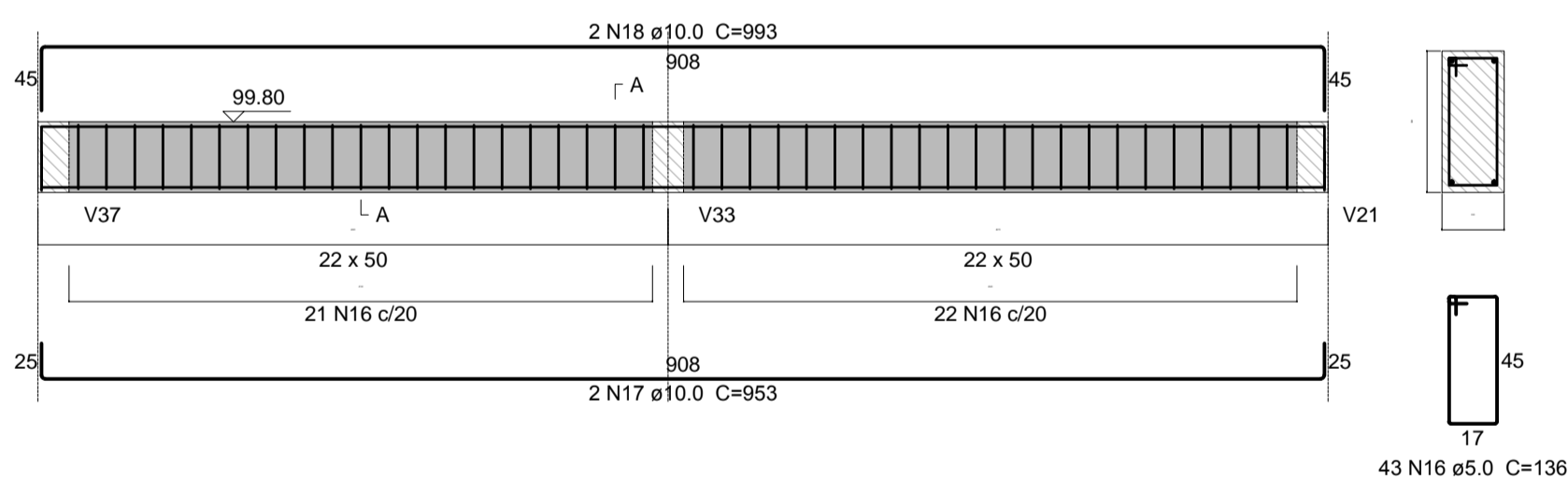
**V88 (20 x 50)**  
ESC 1:50



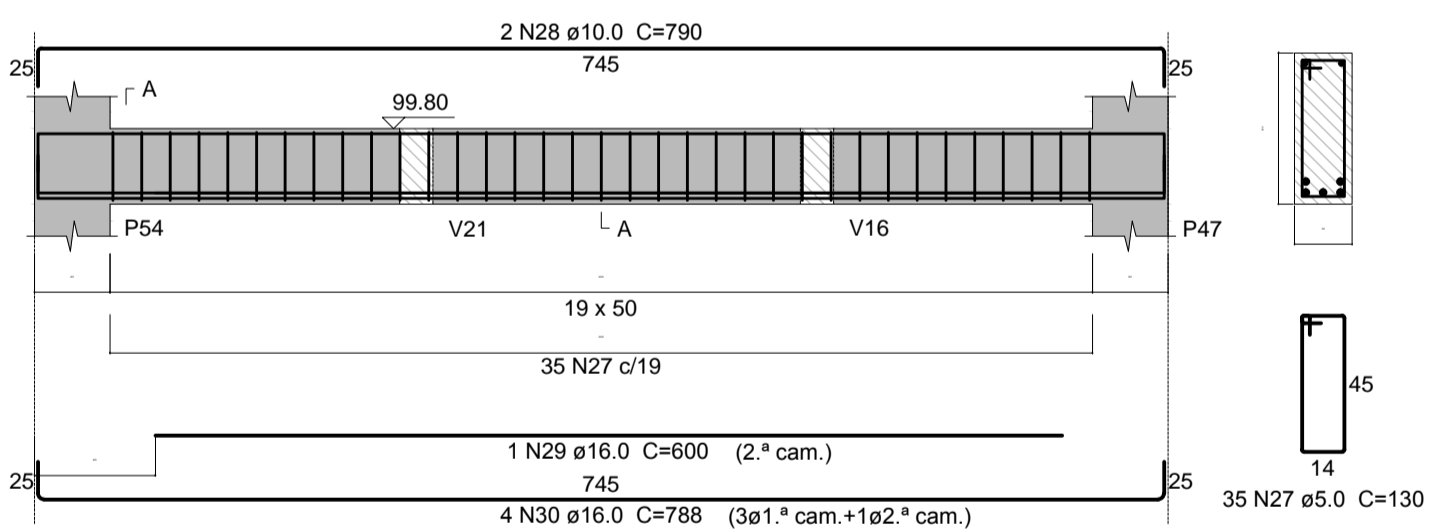
**V89 (22 x 50)**  
ESC 1:50



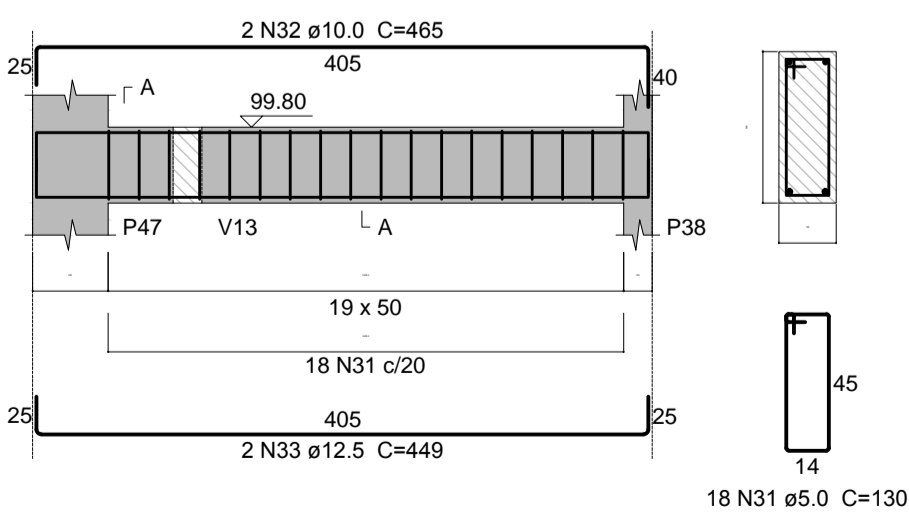
**V87 (22 x 50)**  
ESC 1:50



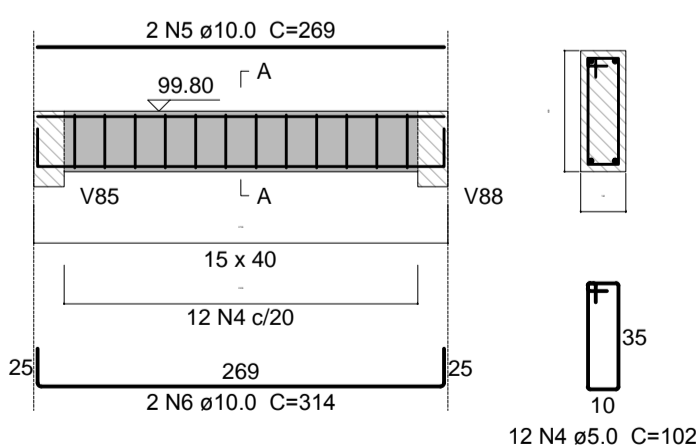
**V90 (19 x 50)**  
ESC 1:50



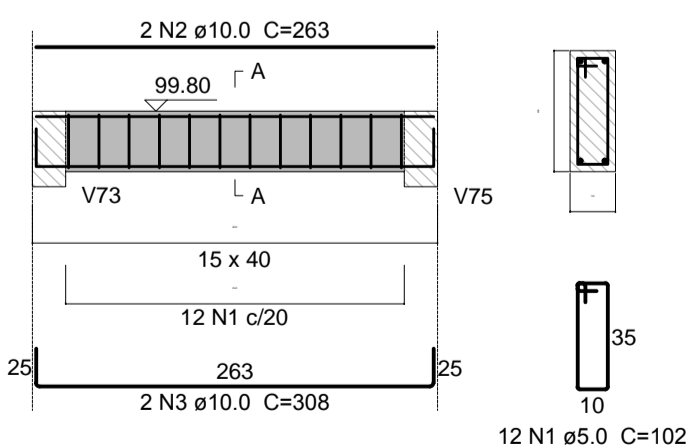
**V91 (19 x 50)**  
ESC 1:50



**V42 (15 x 40)**  
ESC 1:50



**V24 (15 x 40)**  
ESC 1:50



**Relação do aço**

ELEMENTO	AÇO	N	DIAM (mm)	QUANT	C.UNIT (cm)	C.TOTAL (cm)
V24	CA60	1	5.0	12	102	1224
	CA50	2	10.0	2	263	526
V42	CA50	3	10.0	2	308	616
	CA60	4	5.0	12	102	1224
V84	CA50	5	10.0	2	269	538
	CA60	6	10.0	2	314	628
V85	CA60	7	5.0	22	122	2684
	CA50	8	10.0	2	473	946
V86	CA50	9	12.5	2	517	1034
	CA60	10	5.0	22	132	2904
V88	CA50	11	10.0	2	462	924
	CA60	12	12.5	2	506	1012
V89	CA60	13	5.0	16	130	2080
	CA50	14	10.0	2	350	700
V90	CA50	15	10.0	2	395	790
	CA60	16	5.0	43	136	5848
V91	CA50	17	10.0	2	953	1906
	CA60	18	10.0	2	993	1986
V87	CA60	19	5.0	22	132	2904
	CA50	20	10.0	2	462	924
V88	CA50	21	12.5	2	506	1012
	CA50	22	6.3	46	136	6256
V89	CA50	23	16.0	2	1038	2076
	CA50	24	20.0	1	334	334
V90	CA50	25	20.0	1	258	258
	CA50	26	20.0	2	1094	2188
V91	CA60	27	5.0	35	130	4550
	CA50	28	10.0	2	790	1580
V87	CA50	29	16.0	1	600	600
	CA50	30	16.0	4	788	3152
V88	CA60	31	5.0	18	130	2340
	CA50	32	10.0	2	465	930
V89	CA50	33	12.5	2	449	898

**Resumo do aço**

AÇO	DIAM (mm)	C.TOTAL (m)	QUANT + 5 % (Barras)	UNIT (kg)	PESO + 5 % (kg)
CA50	6.3	62.6	6	12 m	16
	10.0	130	12	12 m	84
	12.5	39.6	4	12 m	40
	16.0	58.3	6	12 m	97
	20.0	27.8	3	12 m	72
CA60	5.0	257.6	23	12 m	42
PESO TOTAL (kg)					
CA50				309	
CA60				42	

Volume de concreto (C-20) = 5.16 m³  
Área de forma = 63.22 m²

00 EMISSÃO INICIAL  
REV. DESCRIÇÃO RESPONSÁVEL DATA

**Secretaria de Estado da Saúde**

**HOSPITAL REGIONAL DR. LEOPOLDO BEVILACQUA**  
RUA DOS EXPEDICIONÁRIOS, 140 - PARQUEIRA-AÇU - SP

**GRUPO TÉCNICO DE EDIFICAÇÕES**

PROJETO DE ESTRUTURAS  
H-040 EST-08 00

Av. Dr. Enéas Carvalho de Aguiar, nº188, 3º andar  
São Paulo-SP - Cep: 05403-000  
Tel. (11)3066 8420 Fax (11)3066 8482

Arq. ADHEMAR DIZIOLI FERNANDES  
Arq. CAMILO CHINGOTTE

Arq. M. CRISTINA GOMES JOTTEN

TODOS OS DIREITOS RESERVADOS. PROIBIDA TODA A REPRODUÇÃO OU ALTERAÇÃO SEM PRÉVIA AUTORIZAÇÃO.