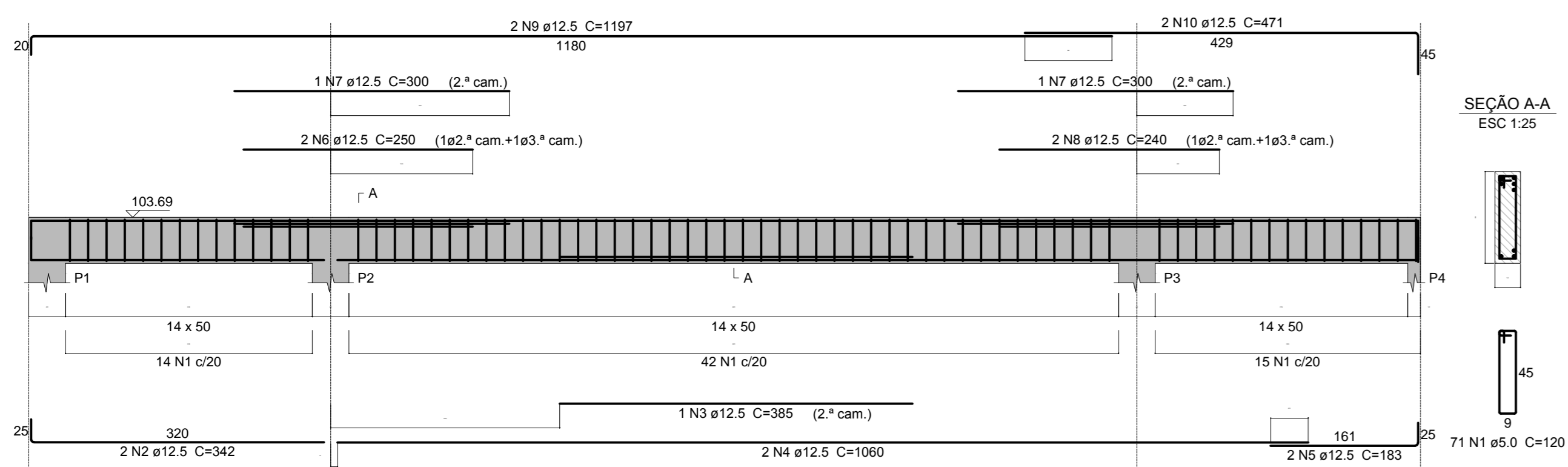
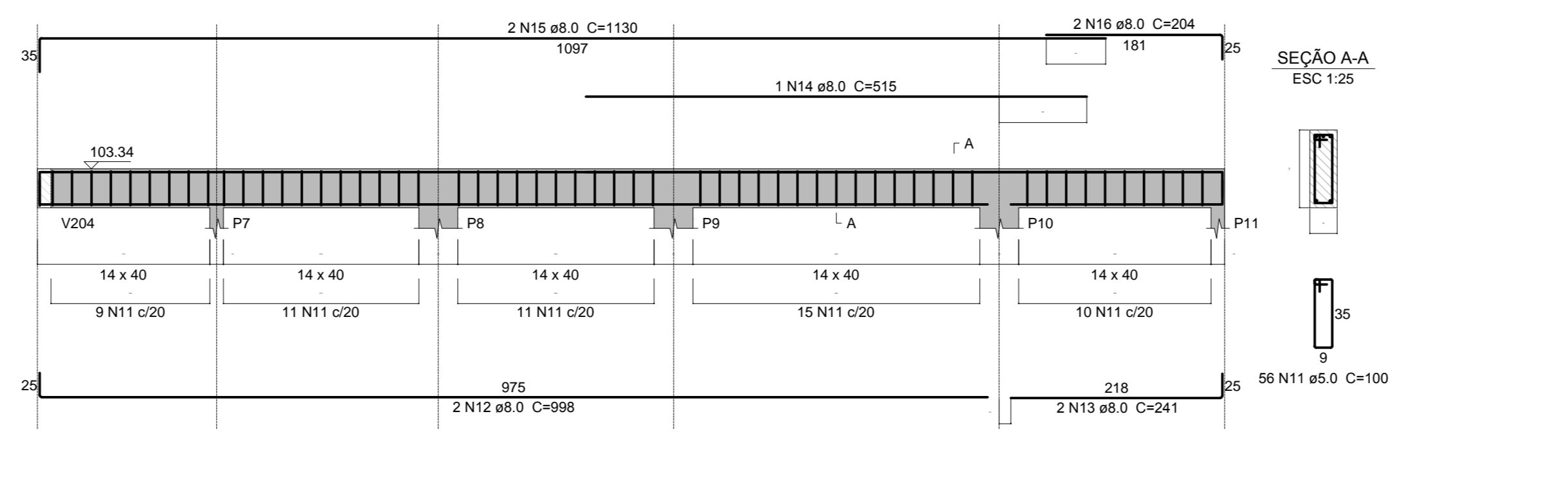


### ARMAÇÃO DAS VIGAS DA COBERTURA

**V201 (14 x 50)**  
ESC 1:50



**V202 (14 x 40)**  
ESC 1:50



**Relação do aço**

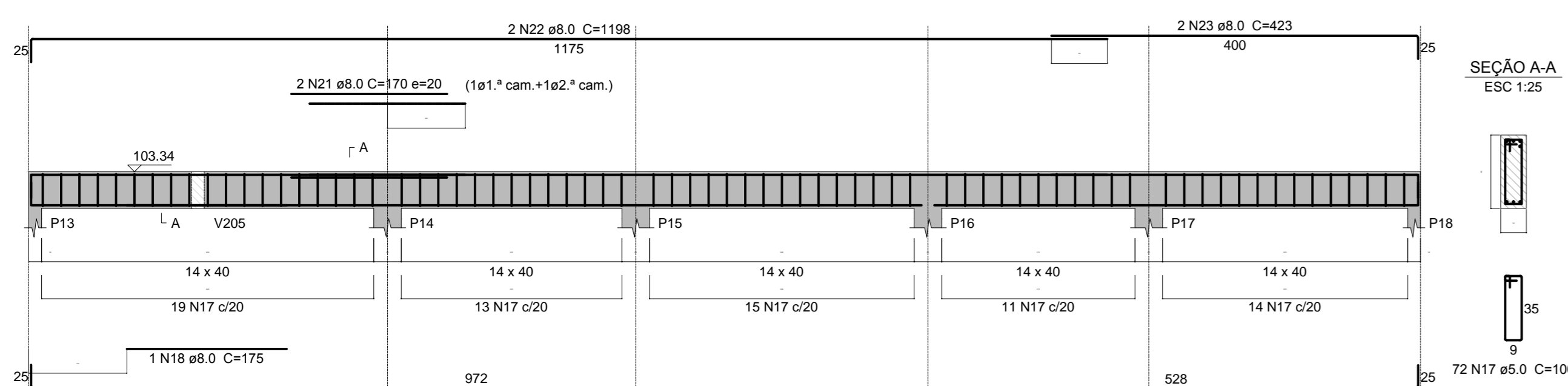
ELEMENTO	AÇO	N	DIAM (mm)	QUANT	C.UNIT (cm)	C.TOTAL (cm)
V201	CA50	1	5.0	71	120	8520
	CA50	2	12.5	2	342	684
	CA50	3	12.5	1	385	385
	CA50	4	12.5	2	1060	2120
	CA50	5	12.5	2	183	366
	CA50	6	12.5	2	250	500
	CA50	7	12.5	2	300	600
	CA50	8	12.5	2	240	480
	CA50	9	12.5	2	1197	2394
	CA50	10	12.5	2	471	942
V202	CA60	11	5.0	56	100	5600
	CA50	12	8.0	2	998	1996
	CA50	13	8.0	2	241	482
	CA50	14	8.0	1	515	515
	CA50	15	8.0	2	1130	2260
	CA50	16	8.0	2	204	408
	CA60	17	5.0	72	100	7200
	CA50	18	8.0	1	175	175
	CA50	19	8.0	2	995	1990
	CA50	20	8.0	2	551	1102
V203	CA50	21	8.0	2	170	340
	CA50	22	8.0	2	1198	2396
	CA50	23	8.0	2	423	846
	CA50	24	5.0	4	158	632
	CA60	25	5.0	37	100	3700
	CA50	26	8.0	2	755	1510
	CA50	27	8.0	2	821	1642
	CA60	28	5.0	17	100	1700
	CA50	29	8.0	2	428	856
	CA50	30	8.0	2	438	876
V204	CA60	31	5.0	30	100	3000
	CA50	32	8.0	4	675	2700
	CA50	33	8.0	1	180	180
	CA60	34	5.0	27	100	2700
	CA50	35	8.0	4	675	2700

**Resumo do aço**

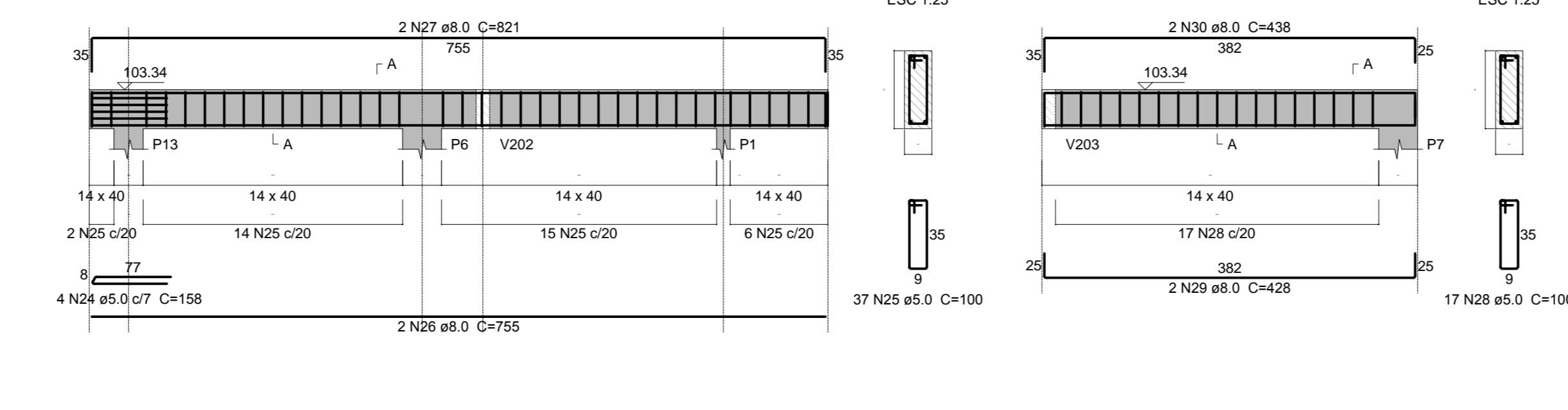
AÇO	DIAM (mm)	C.TOTAL (m)	QUANT (Barras)	UNIT (kg)	PESO (kg)
CA50	8.0	229.8	20	12 m	31
CA60	12.5	84.8	8	12 m	82
CA60	10.0	330.6	28	12 m	51
<b>PESO TOTAL</b>					<b>164</b>

Volume de concreto (C-25) = 3.95 m³  
Área de forma = 65.77 m²

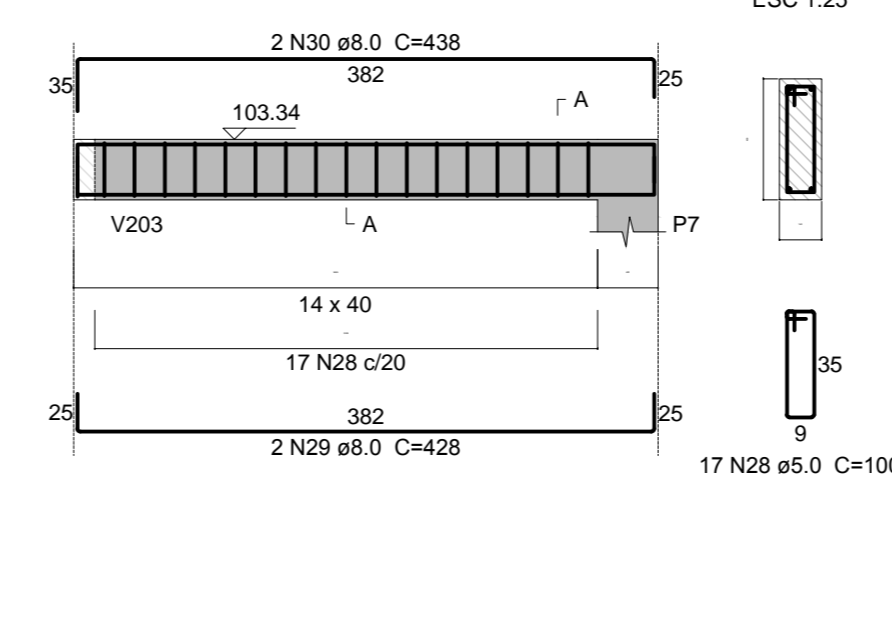
**V203 (14 x 40)**  
ESC 1:50



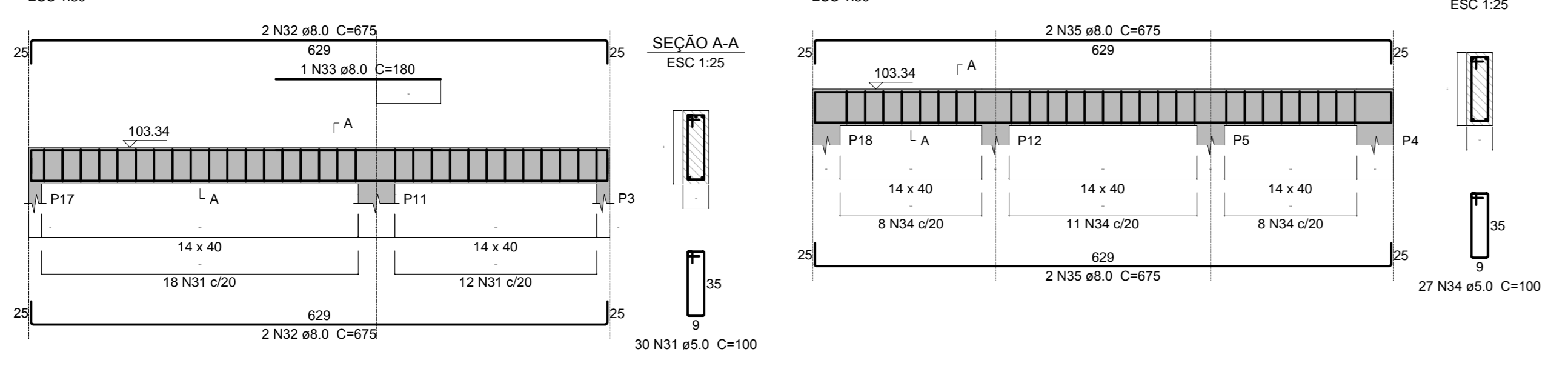
**V204 (14 x 40)**  
ESC 1:50



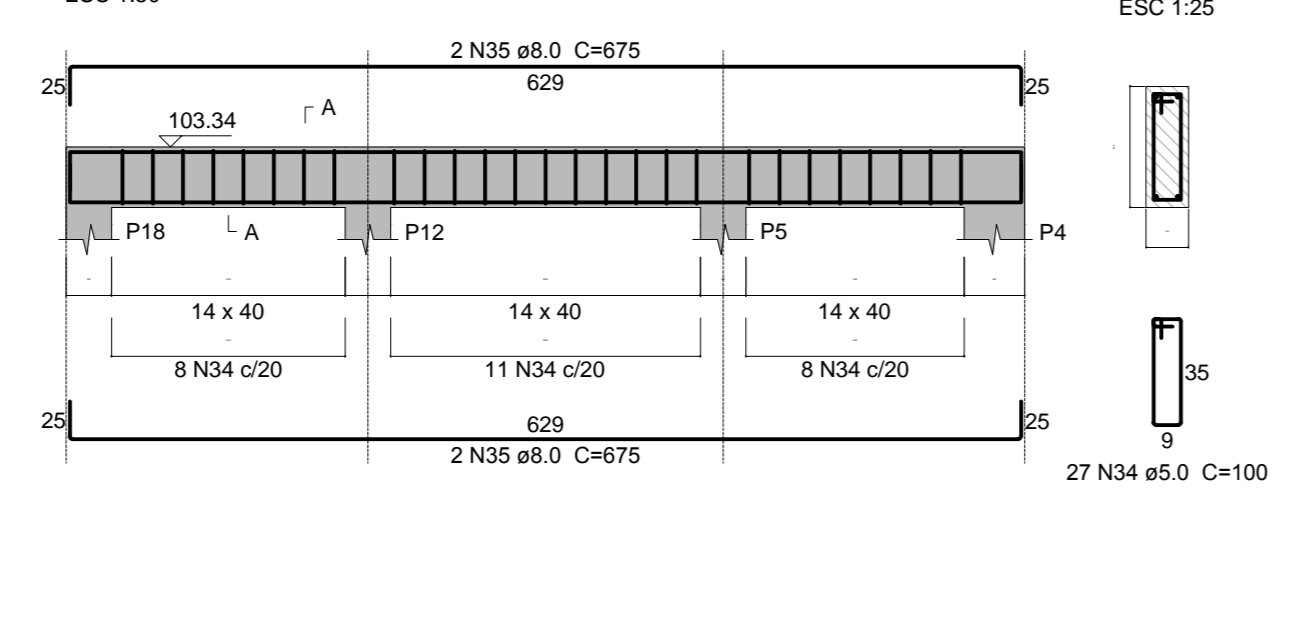
**V205 (14 x 40)**  
ESC 1:50



**V206 (14 x 40)**  
ESC 1:50

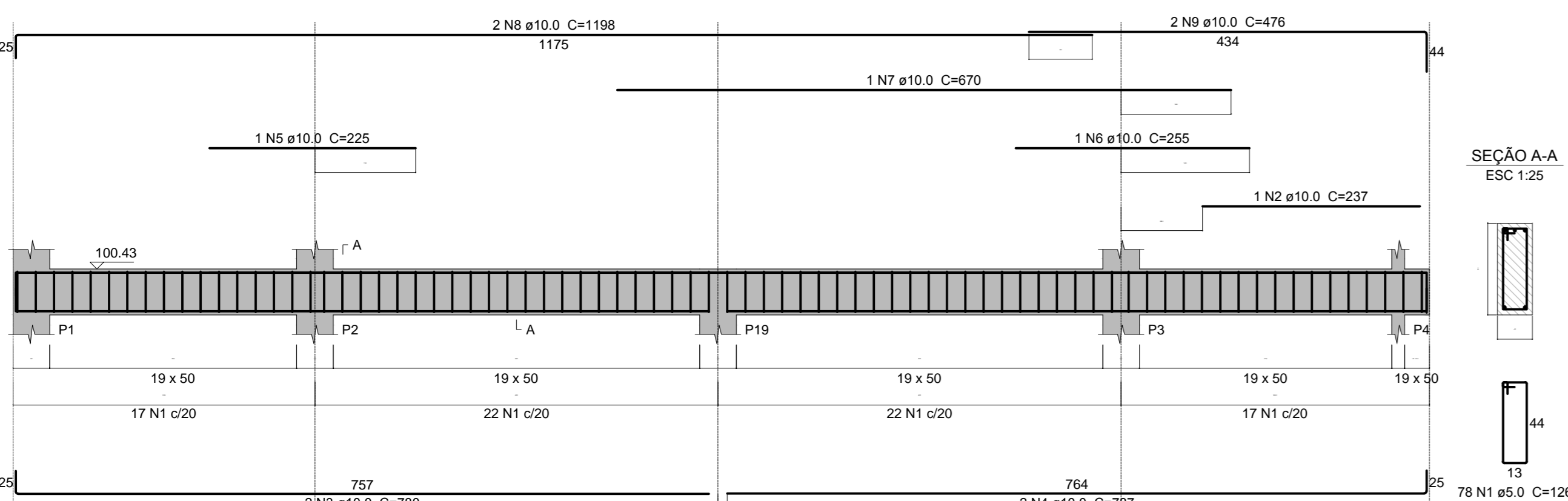


**V207 (14 x 40)**  
ESC 1:50

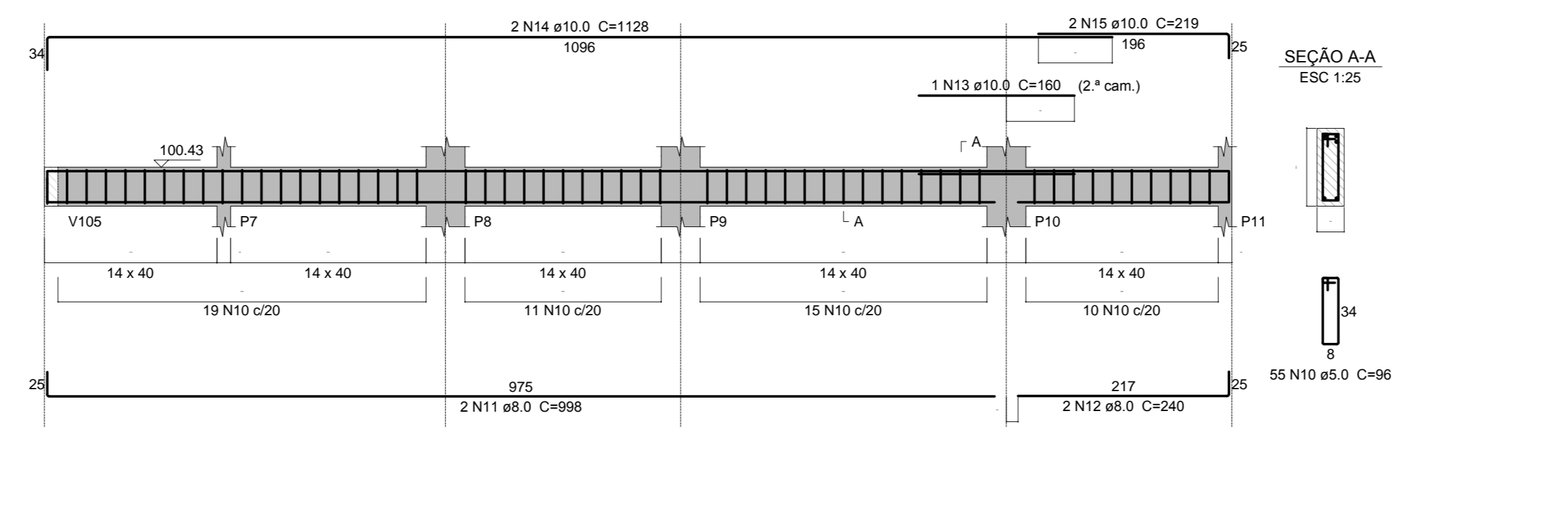


### ARMAÇÃO DAS VIGAS DO TÉRREO

**V101 (19 x 50)**  
ESC 1:50



**V102 (14 x 40)**  
ESC 1:50



**Relação do aço**

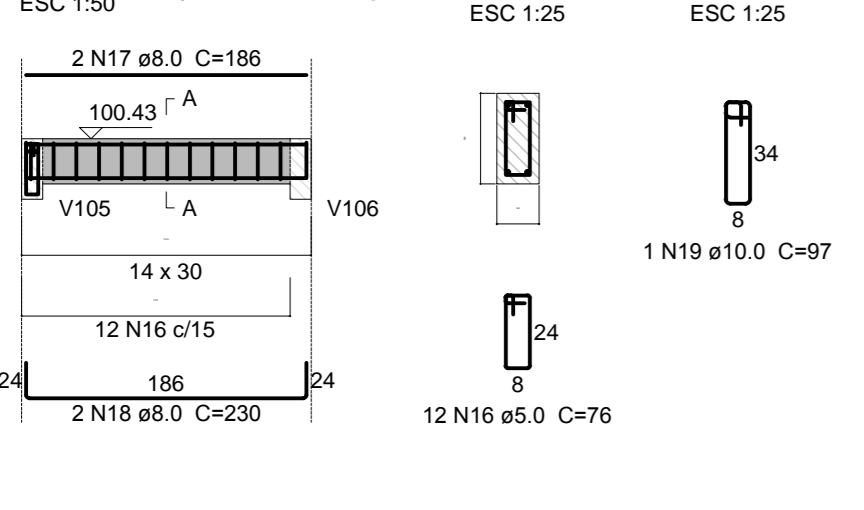
ELEMENTO	AÇO	N	DIAM (mm)	QUANT	C.UNIT (cm)	C.TOTAL (cm)
V101	CA60	1	8.0	78	125	9750
	CA50	2	10.0	1	237	237
	CA50	3	10.0	2	780	1560
	CA50	4	10.0	2	787	1574
	CA50	5	10.0	1	225	225
	CA50	6	10.0	1	255	255
	CA50	7	10.0	1	670	670
	CA50	8	10.0	2	1198	2396
	CA50	9	10.0	2	476	952
	CA50	10	5.0	55	96	5280
V102	CA50	11	8.0	2	998	1996
	CA50	12	8.0	2	240	480
	CA50	13	10.0	1	160	160
	CA50	14	10.0	2	1128	2256
	CA50	15	10.0	2	219	438
	CA50	16	5.0	12	78	912
	CA50	17	8.0	2	186	372
	CA50	18	8.0	2	230	460
	CA50	19	10.0	1	97	97
	CA60	20	5.0	79	96	7584
V103	CA50	21	8.0	2	1141	2282
	CA50	22	10.0	1	170	170
	CA50	23	10.0	2	407	814
	CA50	24	10.0	1	160	160
	CA50	25	10.0	1	185	185
	CA50	26	10.0	1	230	230
	CA50	27	10.0	2	1198	2396
	CA50	28	10.0	2	442	884
	CA60	29	5.0	40	96	3840
	CA50	30	8.0	2	855	1710
V104	CA50	31	8.0	2	175	350
	CA50	32	8.0	2	873	1746
	CA60	33	5.0	17	96	1632
	CA50	34	8.0	2	436	872
	CA50	35	10.0	1	275	275
	CA50	36	10.0	2	426	852
	CA60	37	5.0	19	96	1824
	CA50	38	8.0	1	350	350
	CA50	39	8.0	2	427	854
	CA50	40	8.0	2	436	872
V105	CA60	41	5.0	18	96	1728
	CA50	42	10.0	2	426	852
	CA50	43	12.5	2	426	850
	CA60	44	5.0	18	96	1728
	CA50	45	8.0	2	427	854
	CA50	46	10.0	1	253	253
	CA50	47	10.0	2	426	852
	CA60	48	5.0	30	96	2880
	CA50	49	8.0	2	874	1748
	CA50	50	10.0	1	404	404
V106	CA50	51	10.0	2	662	1324
	CA60	52	5.0	32	96	3072
	CA50	53	8.0	2	755	1510
	CA50	54	8.0	1	130	130
	CA50	55	8.0	2	764	1528

**Resumo do aço**

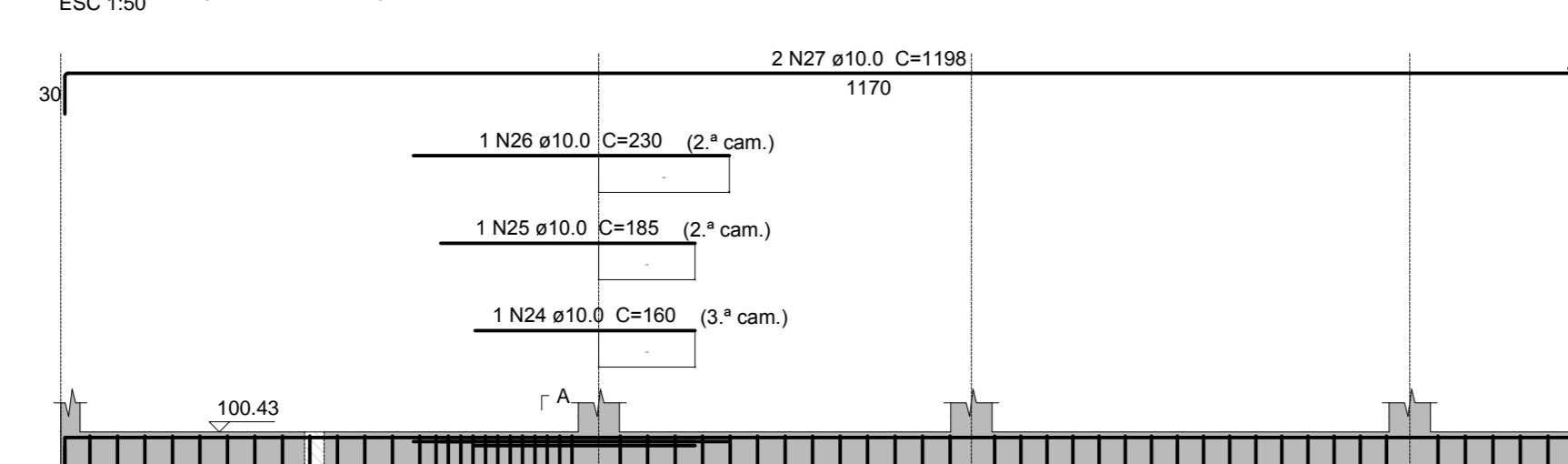
AÇO	DIAM (mm)	C.TOTAL (m)	QUANT (Barras)	UNIT (kg)	PESO (kg)
CA50	8.0	177.2	15	12 m	70
CA50	10.0	205.2	18	12 m	126
CA50	12.5	8.5	1	12 m	8
CA60	5.0	403.1	34	12 m	62
<b>PESO TOTAL</b>					<b>266</b>

Volume de concreto (C-25) = 5.16 m³  
Área de forma = 80.44 m²

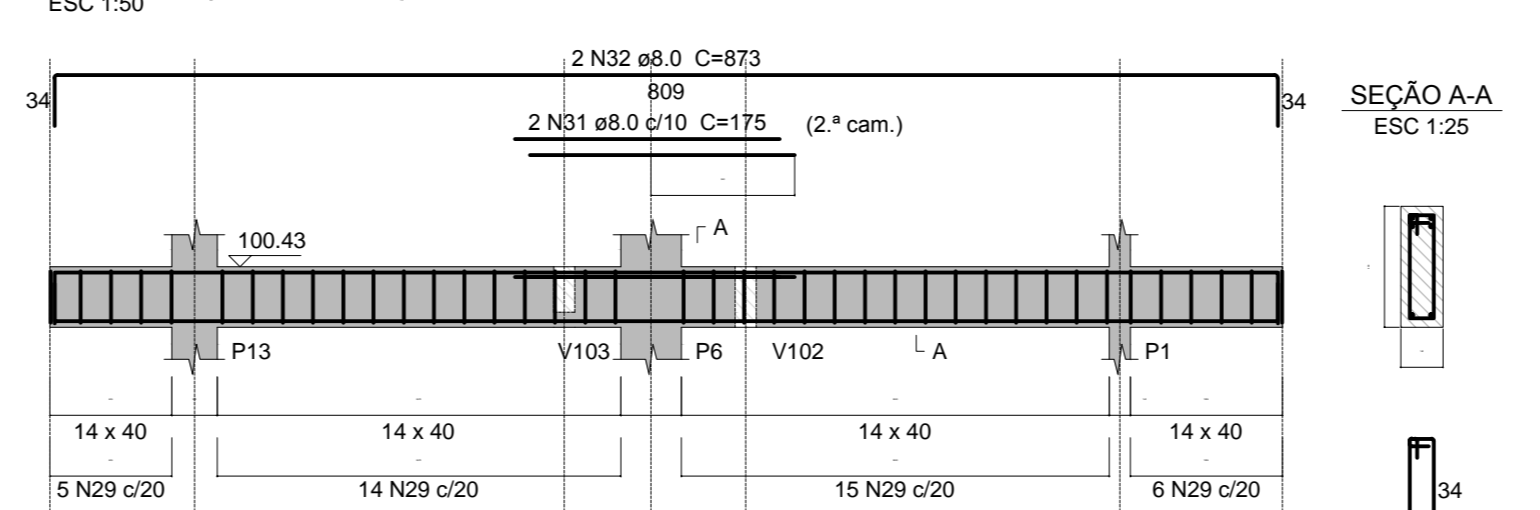
**V103 (14 x 30)**  
ESC 1:50



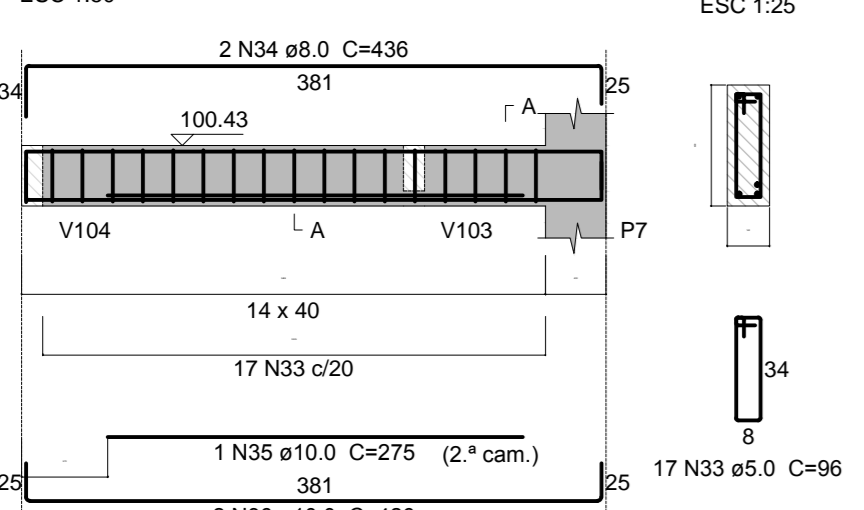
**V104 (14 x 40)**  
ESC 1:50



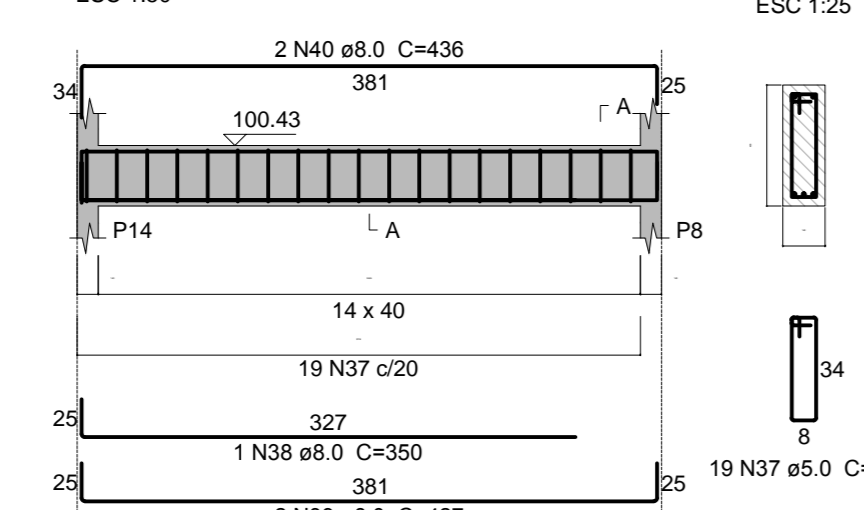
**V105 (14 x 40)**  
ESC 1:50



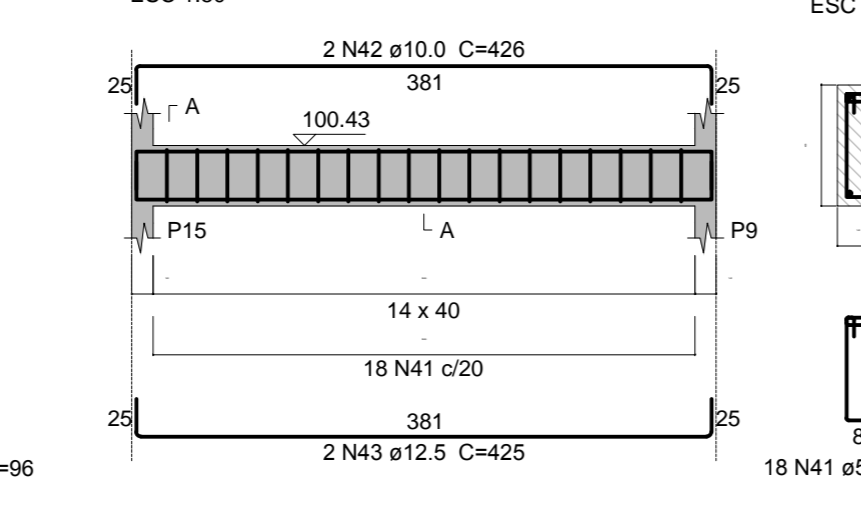
**V106 (14 x 40)**  
ESC 1:50



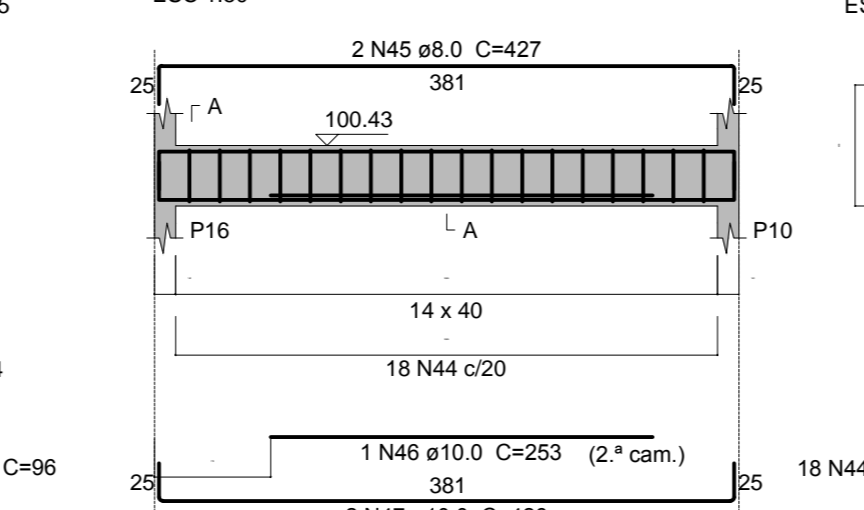
**V107 (14 x 40)**  
ESC 1:50



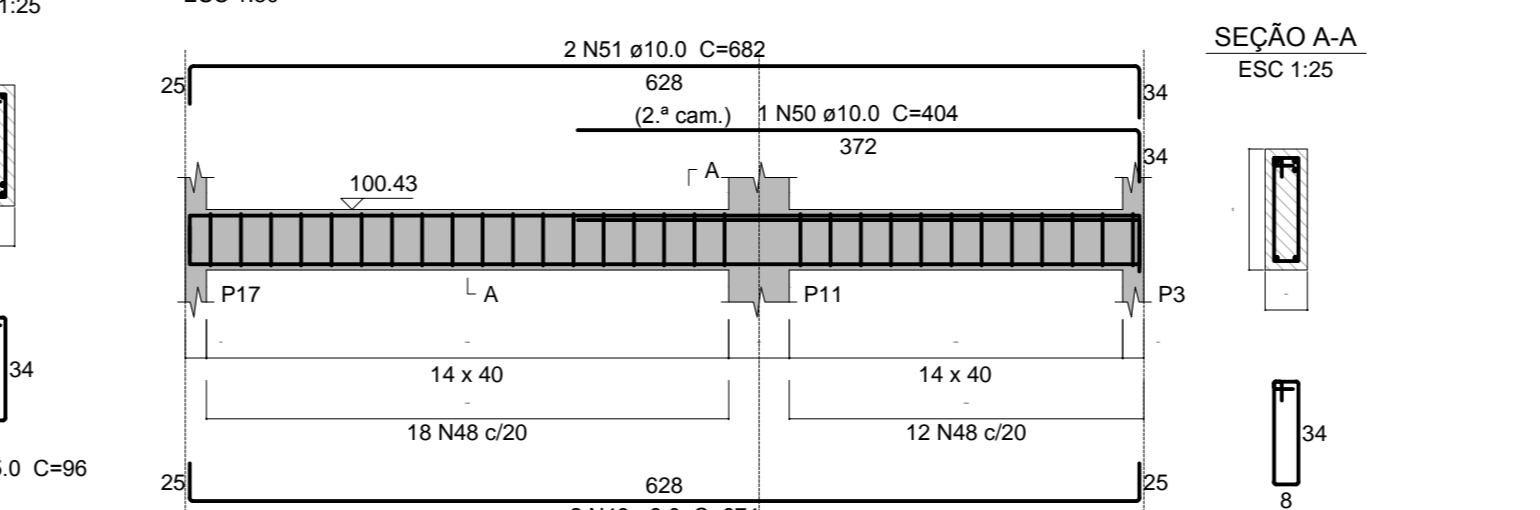
**V108 (14 x 40)**  
ESC 1:50



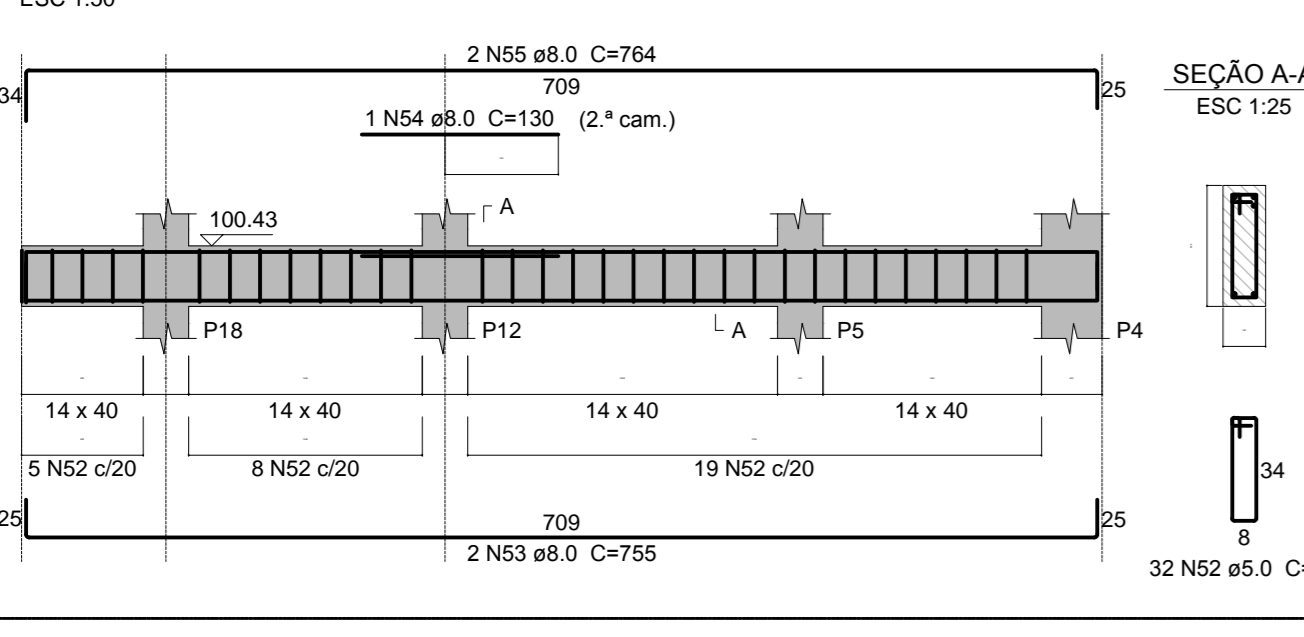
**V109 (14 x 40)**  
ESC 1:50



**V110 (14 x 40)**  
ESC 1:50



**V111 (14 x 40)**  
ESC 1:50



00	EMISSÃO INICIAL	RESPONSÁVEL	DATA
REV.	DESCRIÇÃO	RESPONSÁVEL	DATA
<b>PROJETO DE ESTRUTURA</b>			
projeto:	construção:		
<b>Se e de E d s de</b>			
HOSPITAL REGIONAL DR. LEOPOLDO BEVILACQUA RUA DOS EXPEDICIONÁRIOS, 140 - PARQUEIRA-AGU - SP LIXEIRA ARMAÇÃO DAS VIGAS DO TÉRREO E DA COBERTURA <b>PROJETO DE ESTRUTURAS</b> H-040 EST-03 00 Av. Dr. Ezequiel Corvo de Aguiar, nº185, 3º andar São Paulo-SP, Cx. 05403-000 Tel. (11)3066 8420 Fax (11)3066 8482 Arq. ADEMAR DIZOLI FERNANDES Arq. CAMILO CHINGÓTTE			