

RELAÇÃO DO AÇO

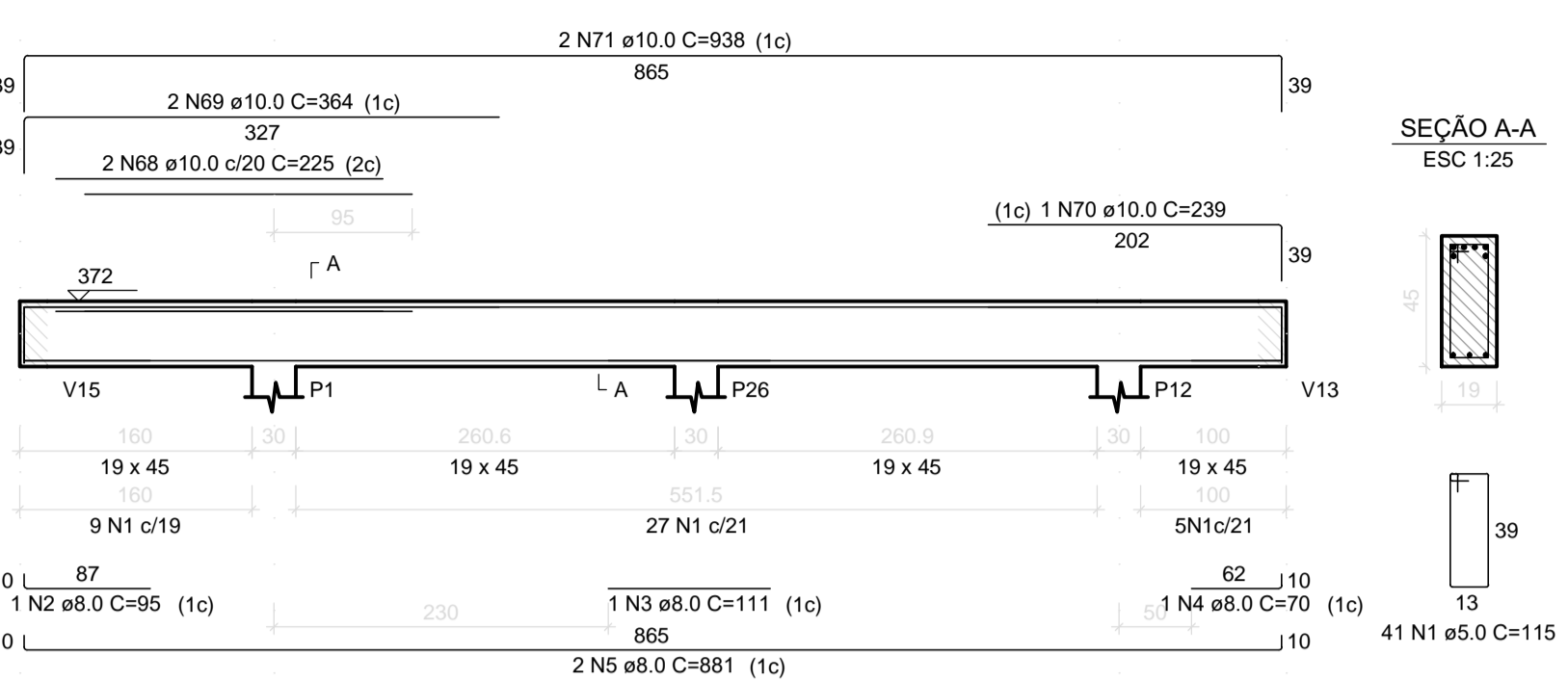
AÇO	N	DIAM (mm)	QUANT	C.UNIT (cm)	C.TOTAL (cm)
CA60	1	5.0	601	115	69115
CA50	2	8.0	1	95	95
	3	8.0	2	111	222
	4	8.0	5	70	350
	5	8.0	14	881	12334
	6	8.0	2	55	110
	7	8.0	1	211	211
	8	8.0	2	80	160
	9	8.0	1	126	126
	10	8.0	1	161	161
	11	8.0	1	771	771
	12	8.0	5	939	4695
	13	8.0	4	175	700
	14	8.0	1	116	116
	15	8.0	1	115	115
	16	8.0	1	209	209
	17	8.0	3	69	207
	18	8.0	1	395	395
	19	8.0	1	162	162
	20	8.0	1	182	182
	21	8.0	4	1029	4116
	22	8.0	1	159	159
	23	8.0	1	154	154
	24	8.0	1	161	161
	25	8.0	2	981	1922
	26	8.0	1	178	178
	27	8.0	2	594	1188
	28	8.0	3	1200	3600
	29	8.0	1	529	529
	30	8.0	1	170	170
	31	8.0	1	190	190
	32	8.0	4	1199	4796
	33	8.0	2	341	682
	34	8.0	1	95	95
	35	8.0	2	401	802
	36	8.0	1	142	142
	37	8.0	1	392	392
	38	8.0	2	455	910
	39	8.0	1	395	395
	40	8.0	1	187	187
	41	8.0	2	167	334
	42	8.0	1	159	159
	43	8.0	2	317	634
	44	8.0	1	1190	1190
	45	8.0	1	196	196
	46	8.0	2	251	502
	47	8.0	1	154	154
	48	8.0	1	187	187
	49	8.0	1	169	169
	50	8.0	2	1077	2154
	51	8.0	1	415	415
	52	8.0	1	150	150
	53	8.0	4	225	900
	54	8.0	2	1147	2294
	55	8.0	2	218	436
	56	8.0	1	199	199
	57	8.0	2	590	1180
	58	8.0	1	106	106
	59	8.0	2	643	1286
	60	8.0	1	109	109
	61	8.0	1	179	179
	62	8.0	1	107	107
	63	8.0	2	865	1730
	64	8.0	3	913	2739
	65	8.0	1	164	164
	66	8.0	1	204	204
	67	8.0	1	114	114
	68	10.0	4	225	900
	69	10.0	2	364	728
	70	10.0	1	239	239
	71	10.0	8	938	7504
	72	10.0	2	255	510
	73	10.0	1	344	344
	74	10.0	1	210	210
	75	12.5	2	937	1874

RESUMO DO AÇO

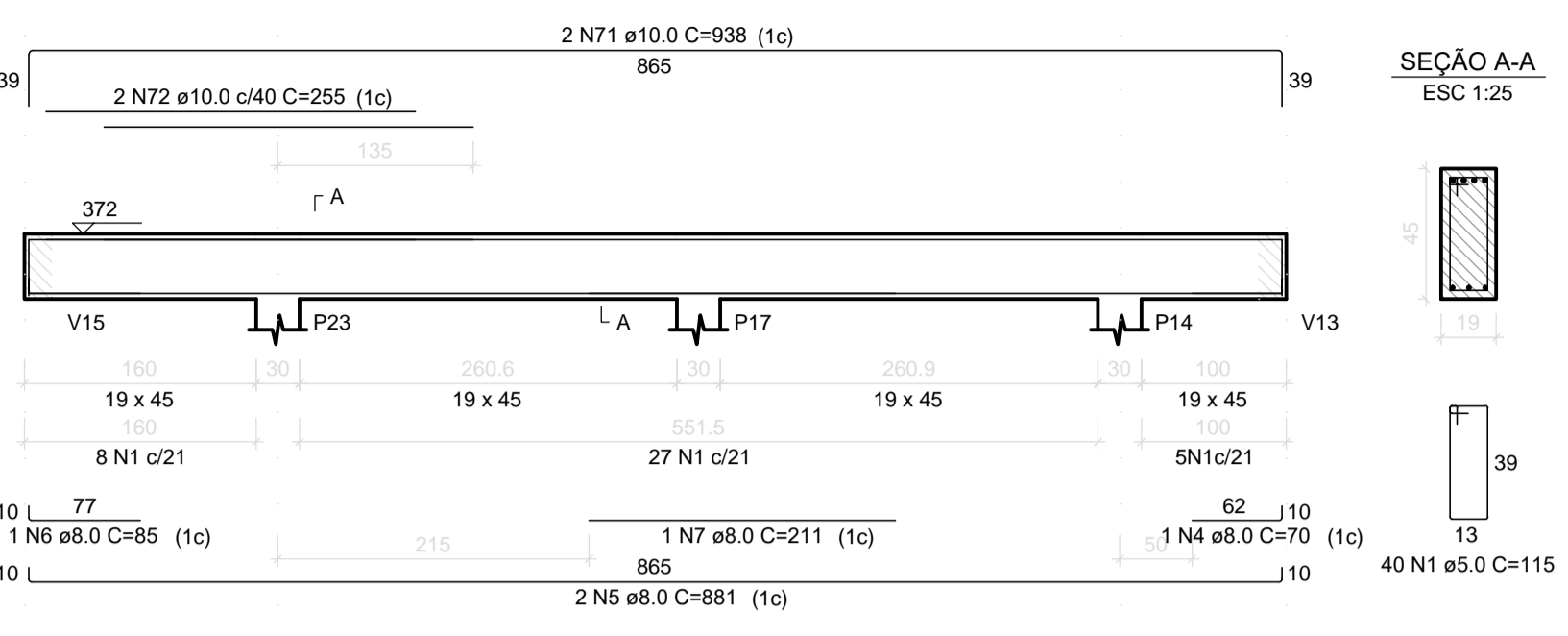
Aço	DIAM (mm)	C.TOTAL (m)	PESO + 10% (kg)
CA50	8.0	601.7	261.2
	10.0	104.4	70.8
CA60	12.5	18.7	19.9
	5.0	691.1	117.2
PESO TOTAL (kg)			
CA50		351.8	
CA60		117.2	

Volume de concreto (C-25) = 11.21 m³
Área de forma = 142.91 m²

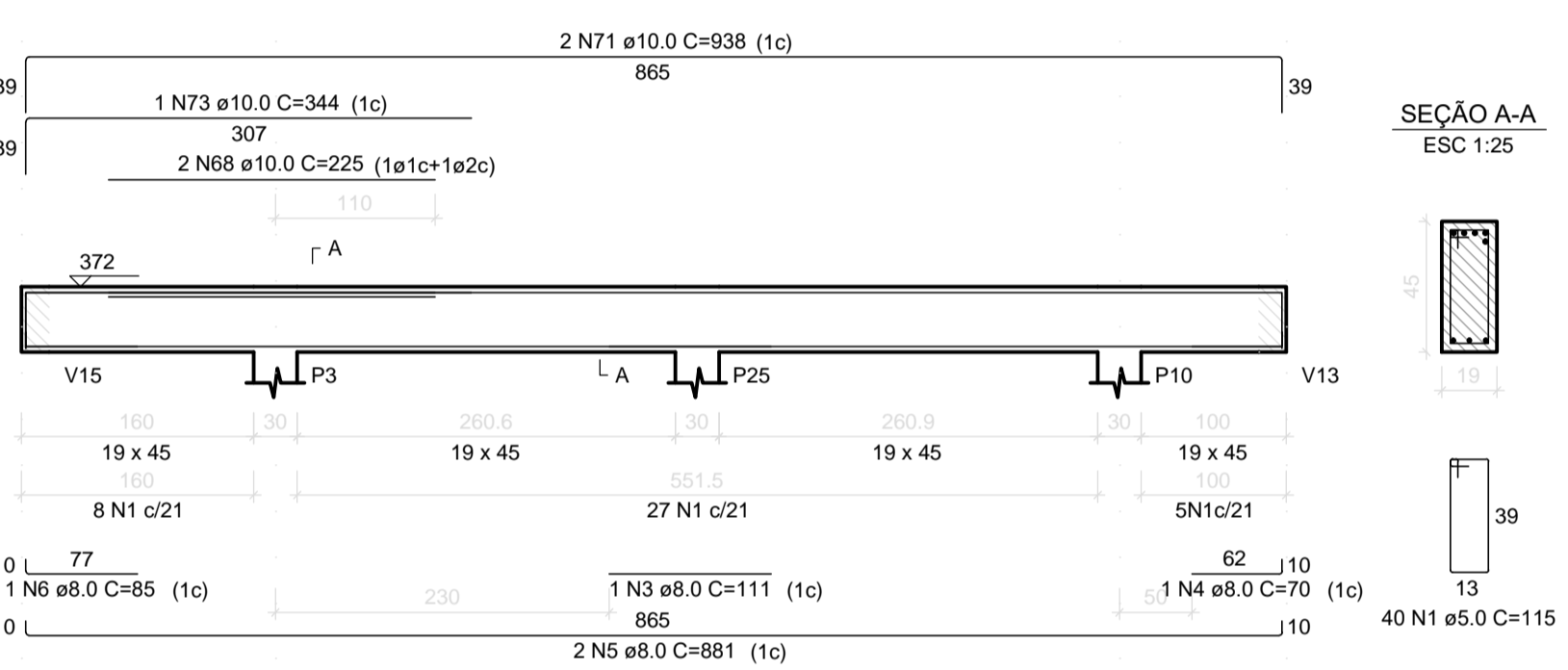
V1



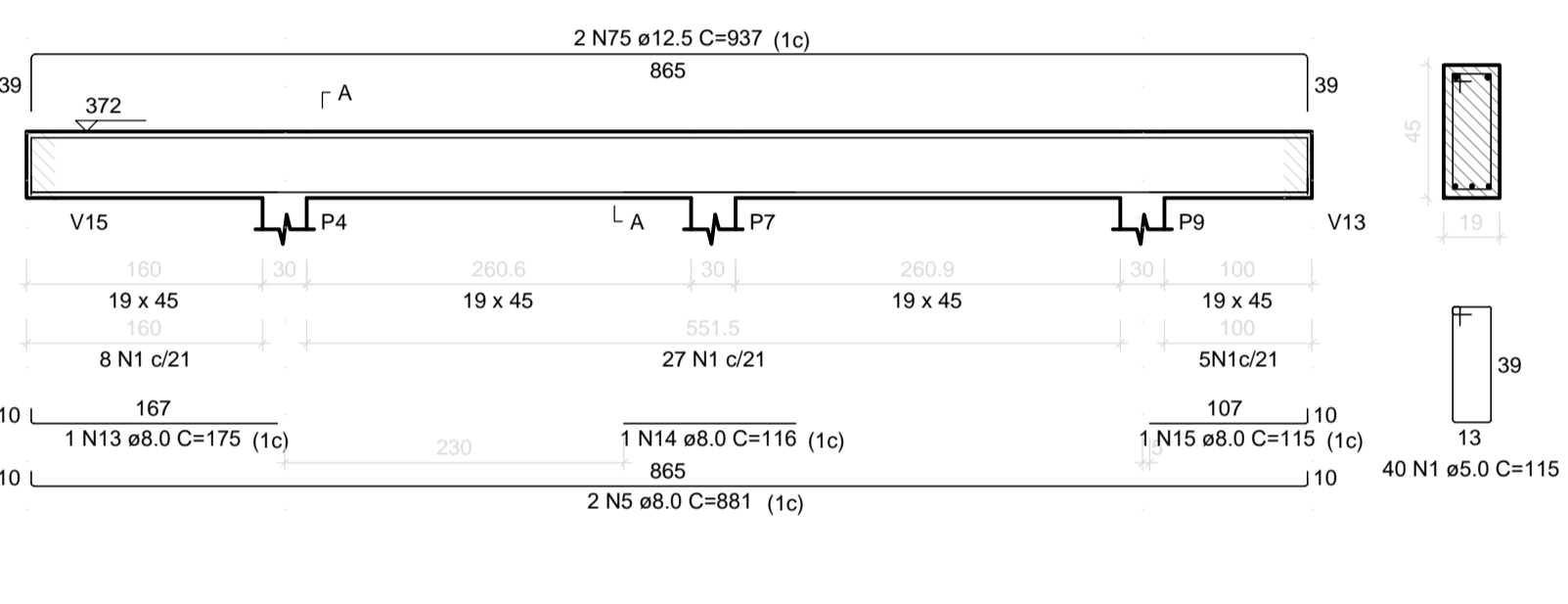
V2



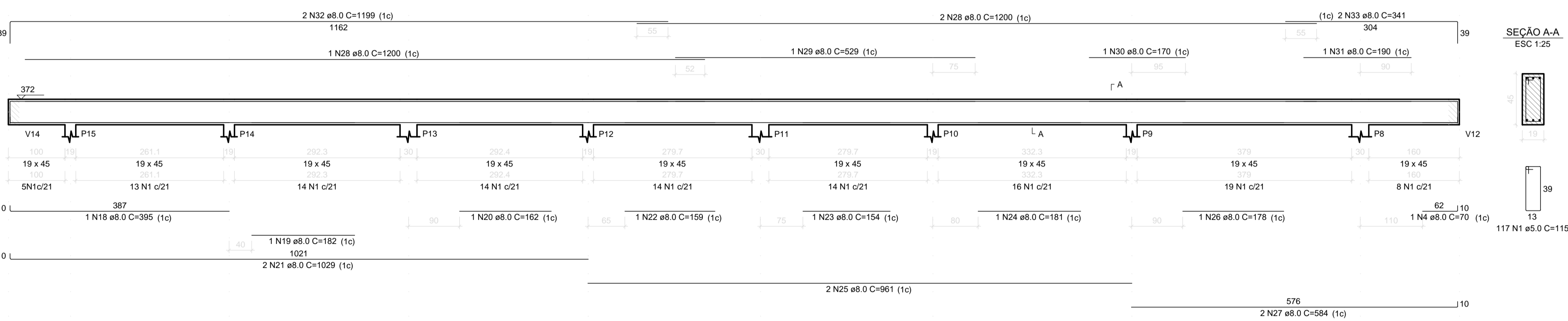
V4



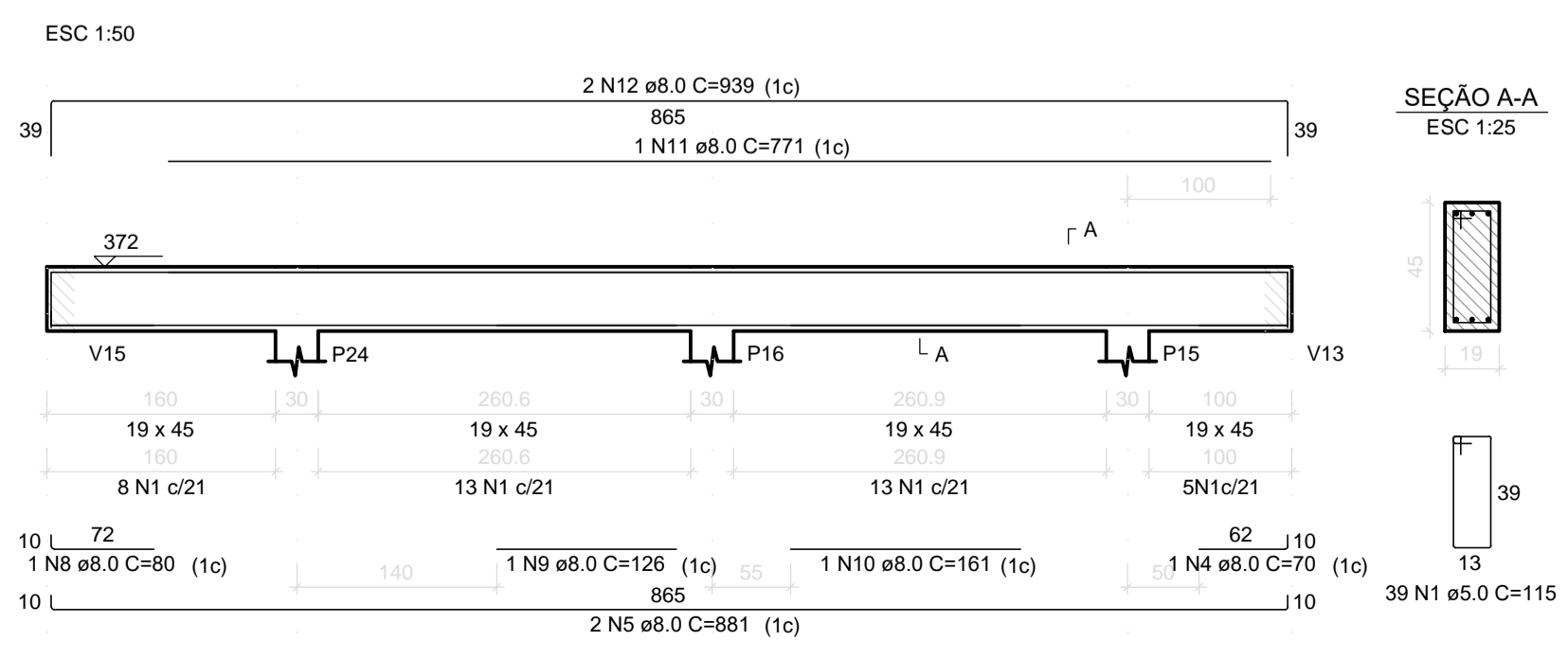
V5



V7



V3



- NOTAS
1. CONFERIR MEDIDAS NO LOCAL
 2. MEDIDAS EM METRO, EXCETO ONDE INDICADO

construção e projeto:

REV. DESCRIÇÃO RESPONSÁVEL DATA

SÃO PAULO Secretaria de Saúde
GOVERNO DO ESTADO

GRUPO TÉCNICO DE EDIFICAÇÕES

PROJETO EXECUTIVO DE ESTRUTURA

H-016 06/10

Av. Dr. Enéas Carvalho de Aguiar, nº188, 3º andar
São Paulo-SP Cep 05403-000
Tel. (11)3066 8420 Fax (11)3066 8482

Eng. YUKIO KITAMURA
Arq. CÂMLIO CHINGOTTE